



# GAT MONTHLY MEMBERSHIP PROGRESS REPORT

Results as of: 6/30/2021

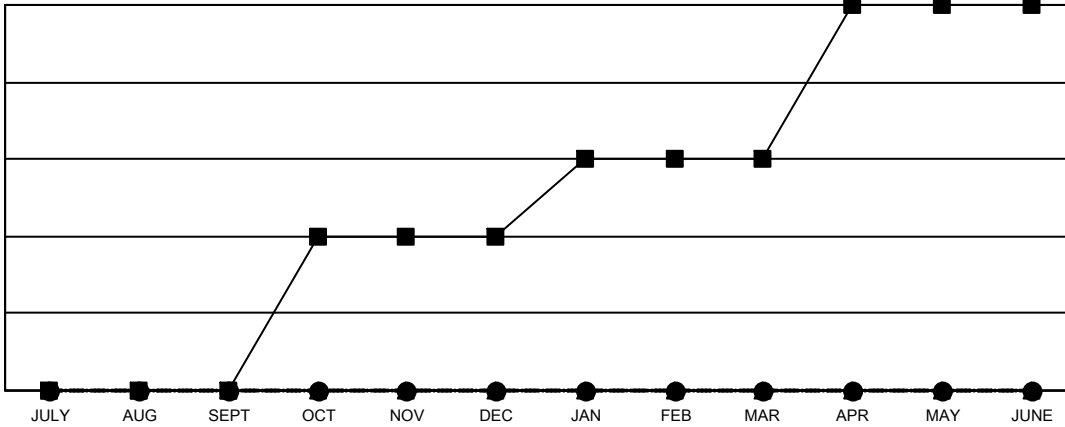
Multiple District 17

LOCATION: KANSAS

Clubs			
RESULTS FOR 2020-2021			
QUARTER	NEW CLUB GOAL	NEW CLUBS	DROPPED CLUBS
JULY/AUG/SEPT	0	0	0
OCT/NOV/DEC	2	0	1
JAN/FEB/MAR	1	0	0
APR/MAY/JUNE	2	0	2

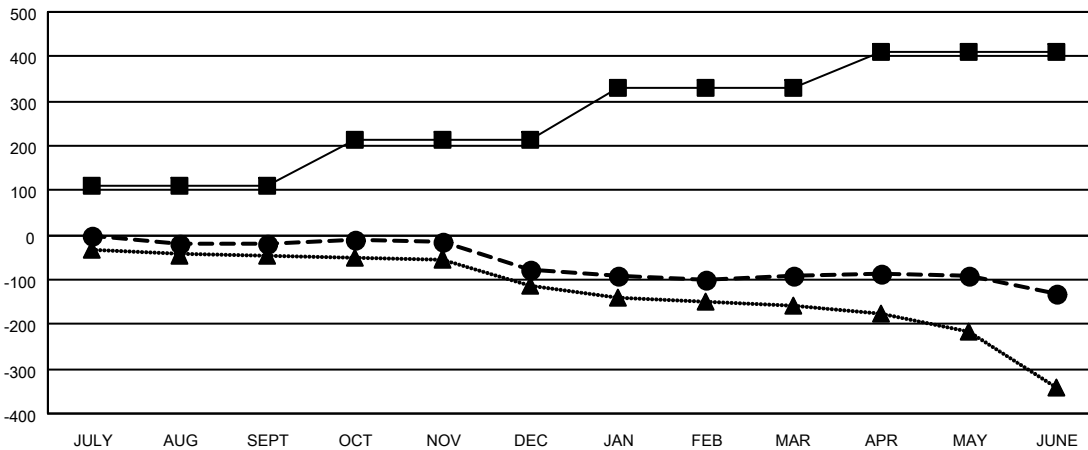
Members			
RESULTS FOR 2020-2021			
QUARTER	MEMBER GROWTH NET GOAL	MEMBER GROWTH ACTUAL	DROPPED MEMBERS ACTUAL (including transfers)
JULY/AUG/SEPT	111	79	94
OCT/NOV/DEC	101	92	144
JAN/FEB/MAR	116	58	67
APR/MAY/JUNE	81	126	162

GOALS AND ACTUAL NEW CLUBS CUMULATIVE



- - CURRENT YEAR GOALS FOR NEW CLUBS
- - CURRENT YEAR ACTUAL NEW CLUBS
- ▲ - LAST YEAR ACTUAL NEW CLUBS

GOALS AND ACTUAL MEMBERS CUMULATIVE



- - MEMBER GROWTH NET GOAL
- - MEMBER GROWTH ACTUAL
- ▲ - LAST YEAR MEMBERSHIP ACTUAL

DROPPED CLUBS: 3	
<u>DROPPED MEMBERS</u>	
DECEASED	81
CLUB CANCELLED	8
OTHER	378
<b>TOTAL</b>	<b>467</b>

108 CLUBS OF 219 ADDED 1 OR MORE NEW MEMBERS
<a href="#">CLICK HERE FOR CUMULATIVE MEMBERSHIP DATA</a>

<u>GENDER DISTRIBUTION</u>	
MALE	2,925 (69.05%)
FEMALE	1,311 (30.95%)
TOTAL FAMILY UNIT MEMBERS	948
FAMILY MEMBERS PAYING HALF DUES	484